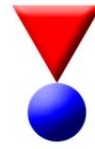


# Probe Software

Probe Software, Inc.  
885 Crest Drive  
Eugene, OR 97405 USA  
(541) 343-3400  
[sales@probesoftware.com](mailto:sales@probesoftware.com)  
[www.probesoftware.com](http://www.probesoftware.com)



Software for MicroAnalysis

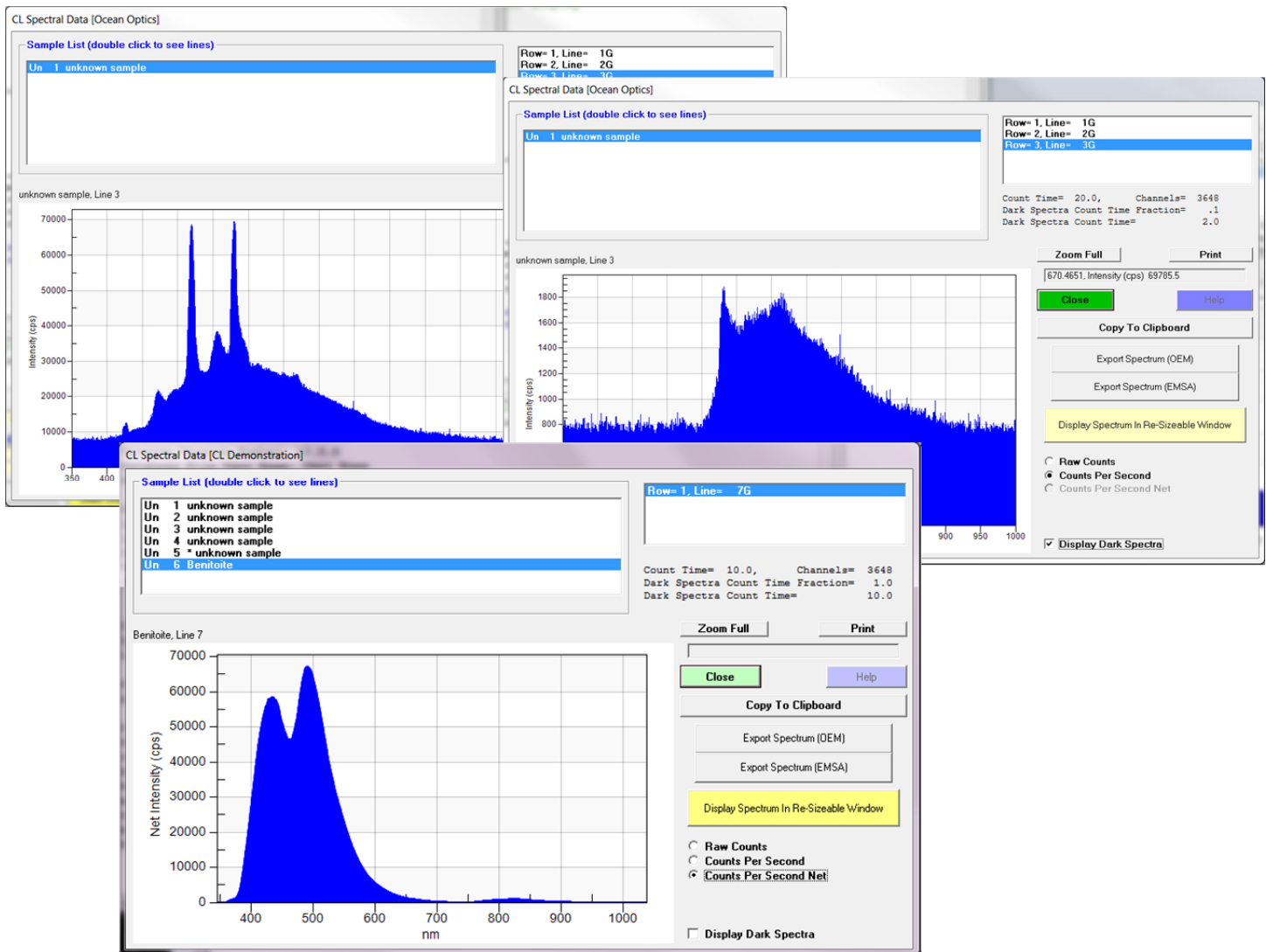
## Probe for EPMA

## Probe Image

## PictureSnapApp

### Probe Software Cathodo-Luminescence Spectrum Integration

Probe for EPMA supports integration of cathodo-luminescence (CL) spectrum acquisition in Probe for EPMA for manual or automated point analyses. This CL spectrum acquisition can be performed in parallel with WDS intensity and EDS spectrum acquisitions.



Currently we support most USB interfaced spectrometers from Ocean Optics, e.g., USB4000, QE65000, etc. For those who have or intend to purchase an ExCLent CL acquisition system for CL spectrum imaging, we can interface to their spectrometer through a simple USB switch which we provide.

Please contact us if you have any questions or would like to receive a quotation.

Last updated 08/30/2021