

Probe Software

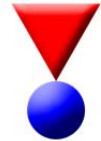
Software for MicroAnalysis

Probe for EPMA

Probe Image

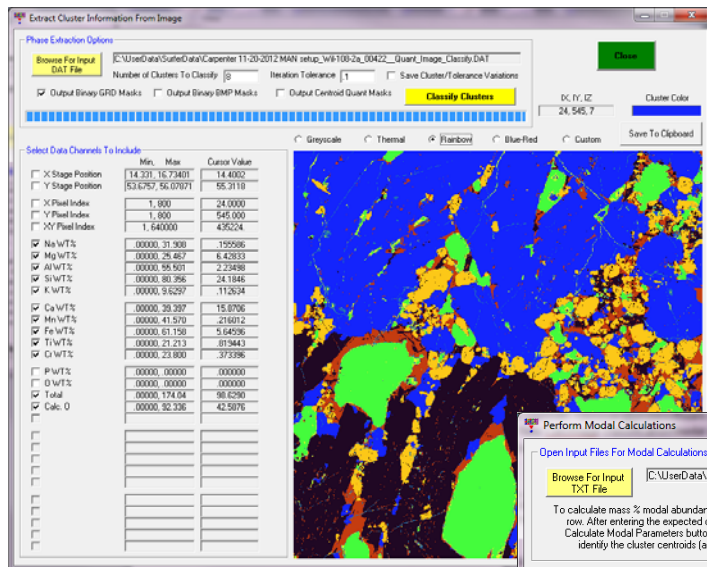
PictureSnapApp

Probe Software, Inc.
885 Crest Drive
Eugene, OR 97405 USA
(541) 343-3400
sales@probesoftware.com
www.probesoftware.com



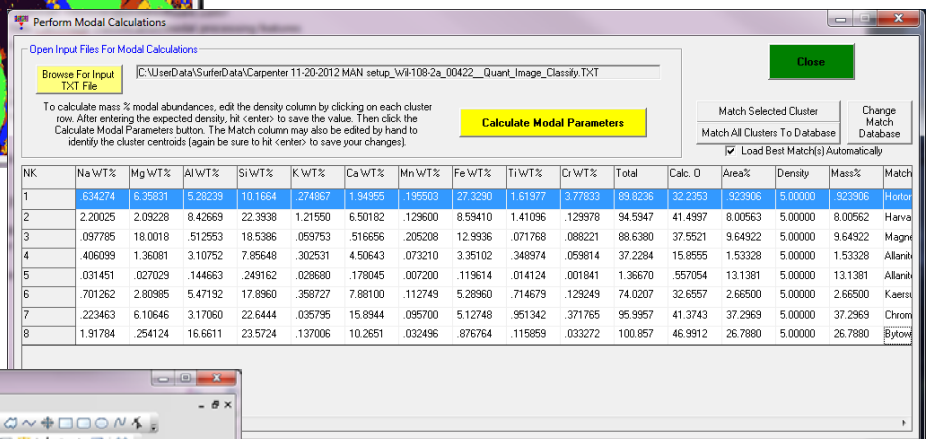
Calclmage Quantitative Classification and Automatic Match Feature

- Processing of x-ray intensity maps into modal abundances is fast, informative and easy in our new Calclmage image processing application.



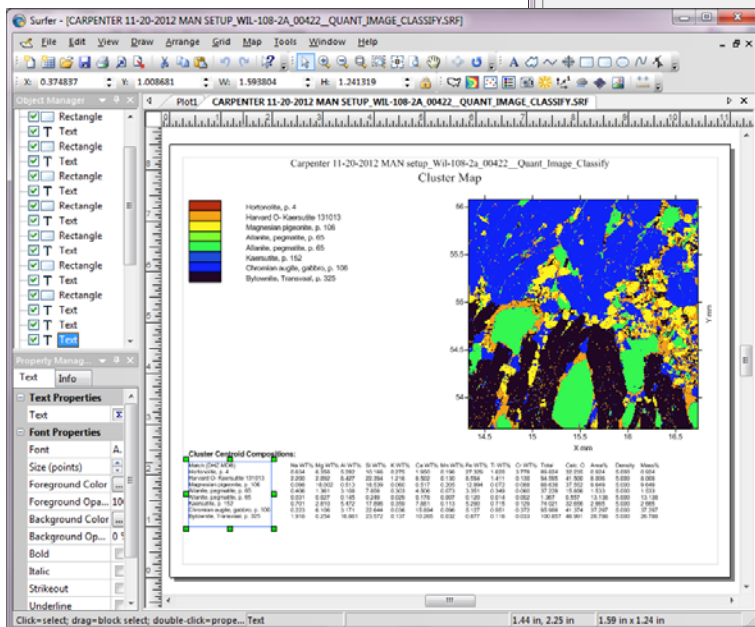
- Import the calculated centroid averages for the phases present using the Processing | Modal Abundances menu and

- First import an x-ray acquisition from Probe Image using the Calclmage New Project Wizard.
- Run the quantification for background, matrix and interference effects to automatically save all concentration data for every pixel.
- Import the quantitative results using the Calclmage Processing | Classify menu and run a Hartigan-Wong kmeans clustering by specifying the number of clusters and desired precision.



perform an automatic match using any compositional database.

- Then calculate the % mass abundances based on default or specified phase densities.
- Finally, run the automatically generated Surfer script to create presentation quality output of your work.
- Using 1% clustering precision, these processing steps required about 60 seconds.



Contact: John Donovan, donovan@probesoftware.com

or call (541) 343-3400 for more information.